



CLAY 2027  
Madrid  
20-25 June

## PRACTICAL INFORMATION DOCUMENT

[clay2027.aipea.org/](http://clay2027.aipea.org/)



CLAY 2027  
Madrid  
20-25 June

### Venue

The conference will be held at the Faculty of Biology of the Autonomous University of Madrid (UAM), located in the Campus de Excelencia UAM+CSIC in Cantoblanco.

Situated just north of Madrid, Cantoblanco Campus boasts a prime location. It provides a serene academic environment while remaining well-connected to the city center, offering the convenience of a campus easily accessible from various key points across the city.

The preconference workshop will be held at the Materials Science Institute of Madrid (ICMM-CSIC), which is located next to the Biology Building.





CLAY 2027  
Madrid  
20-25 June



## Programme

### *Clays for life & society*

- Pre-conference workshop: "Applying and Innovating on Clays for a more Sustainable World"
- Main topics:
  - Clays & Society
  - Clays & Technology & Innovation
  - Clays & Geology & Planetary Science
  - Clay Science Fundamentals & Teaching

## Key dates

**2026**

**1 March:** call for thematic sessions

**10 June:** reminder by email

**25 June:** close call for thematic sessions

**1 September:** announcement for thematic sessions

**30 September:** call for abstract submission and early bird registration

**15 November:** reminder by email

**20 December:** deadline for abstract submission (with 2 weeks extension to be announced the last day)

**2027**

**15 January:** session arrangement by session chairs, then 2 weeks for open questions

**12 February:** abstract acceptance (for those who paid registration fee)

**1 March:** early bird registration end, late registration starts

**9 April:** announcement of the final program

**Days/weeks after (or before):** post(pre)-conference one- and/or two-day field trips

**20 June:** pre-conference workshop

**22-25-26 June:** field trips



## Field trips

### THREE FIELD TRIPS TO play CLAY

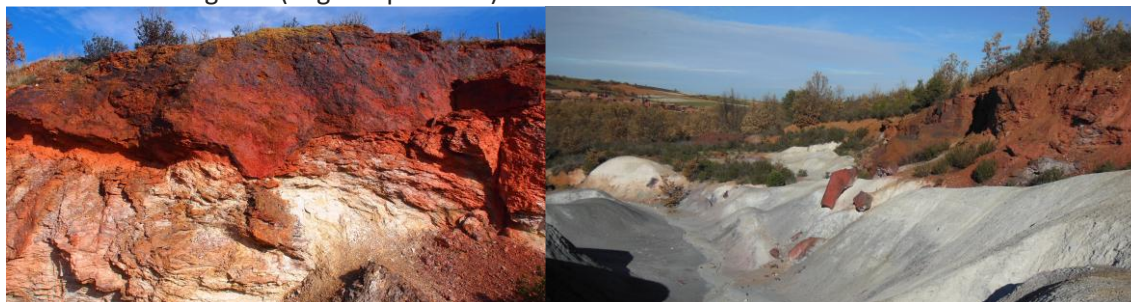
- **FROM MIOCENE TO PLEISTOCENE:** magnesian clays, paleosoils and first humans in Madrid basin and Central System range (central Spain, Madrid province)



- **KAOLIN AND BENTONITE DEPOSITS IN WEST IBERIAN PENINSULA (TAMAME DE SAYAGO),** landscapes at “Los arribes del Duero” (Zamora province).



- **KAOLINITE AND ALUNITE IN THE EASTERN DOMAIN OF THE SPANISH CENTRAL SYSTEM,** on Silurian slates affected by a deep hydrothermal alteration near the village of Madriguera (Segovia province).





CLAY 2027  
Madrid  
20-25 June

## Accommodation

Finding accommodation in Madrid that is well-connected to the Cantoblanco campus by public transport, is quite feasible, thanks to the city's extensive hotel offerings. There is a wide range of hotels across from Madrid that are just a short bus or train ride away from the campus. When looking for places, consider areas like Chamartín, Plaza Castilla, or even parts of the city center, as these locations generally offer excellent public transport links to the campus. The nearby city of Tres Cantos is also a highly recommended area for accommodation, given its proximity to the campus and several hotels located near the commuter train station.

There are also affordable lodging options available directly on the Cantoblanco campus itself, as well as in very close proximity. These often include student residences, which can be a great choice, as well as several hotels.

A list of recommended accommodation, including those with which special agreements will be made, will be announced on due date.

## How to reach the venue

Getting to UAM is straightforward thanks to Madrid's efficient public transportation network, taking around 10-15 minutes from Chamartín Train Station, 15-20 minutes from Plaza de Castilla, or 30-35 minutes from Puerta del Sol (City Center).

To access the Cantoblanco campus by public transport there are two possibilities:

- By commuter train (Cercanías): the most direct and popular option is the Cercanías C4 line (C4/a and C4/b), which has a dedicated station right on campus called "Cantoblanco Universidad." This line connects directly to major hubs like Atocha, Sol, and Chamartín:

**From either one of**

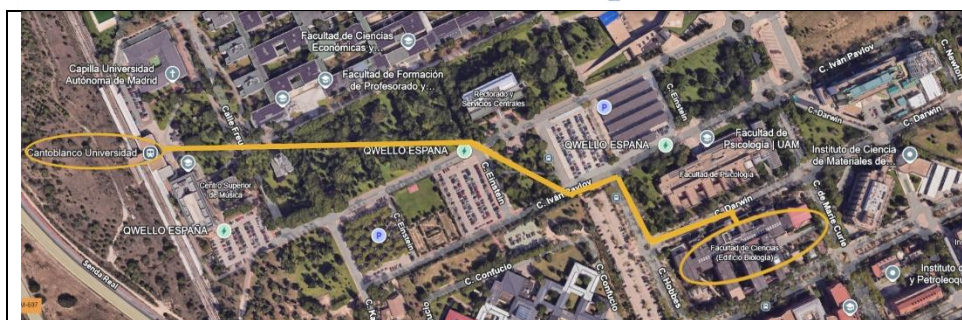
- Atocha
- Sol
- Nuevos Ministerios
- Chamartín

**take the [train](#) in direction**

- Alcobendas/San Sebastián de los Reyes
- Colmenar Viejo

**and get off at Cantoblanco Universidad**

from there you have to walk approximately 10 minutes (see the map below):



- By bus: several intercity bus lines (interurbanos) also serve the Cantoblanco campus, connecting it to various neighborhoods in Madrid and surrounding towns. The interurban lines that stop on campus are:
  - 714 (Plaza Castilla-UAM - Universidad de Comillas)
  - 827 (Canillejas-Alcobendas- UAM-Tres Cantos) (Direct connection to the airport)
  - 827A (SSReyes-Alcobendas-UAM)
  - 828 (Canillejas-Alcobendas-Universidad Autónoma) (Direct connection to the airport)
  - Lines 711, 712, 713, 715, 716, 717, 721, 722, 724, 725, 726, and 876 stop near the campus.

To access the Cantoblanco campus by car:

**Coordinates:** 40° 32' 35.72" N – 3° 41' 21.51" W

**Road M-607** Madrid-Colmenar Viejo (Northwest) Exit number 15

## Awards

- **Martín-Vivaldi Award**  
The Martín Vivaldi Award is an International award, sponsored by the European Clay Groups Association (ECGA) and financially supported by the Sociedad Española de Arcillas – SEA (Spanish Clay Society), to offer the recipient financial assistance, with the aim of enabling him/her to participate in a CLAY Meeting for the purpose of presenting his/her paper.

The closing date for reception of manuscripts will be announced soon.

Rules: <https://sea-arcillas.es/en/awards/martin-vivaldi-award/>



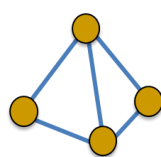


CLAY 2027  
Madrid  
20-25 June

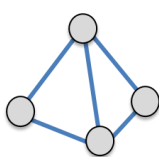
## Sponsors

Research institutions and companies such as CIEMAT, CSIC, CLARIANT, SEPIOLSA, and TOLSA are members of the Spanish Clay Society. Currently, we are in contact with other companies from the clay industry sector, public and private environmental technology management, as well as consultants specializing in sustainability and circular economy activities. Very soon, we will provide more details about the sponsoring of the congress.

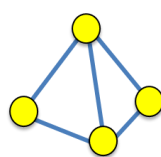
Our idea is to propose a 4-tier sponsorship structure: Platinum, Gold, Silver and Bronze, each of which would offer progressively more benefits and visibility for a higher price. This tiered approach allows sponsors to choose a level that aligns with their budget and desired exposure.



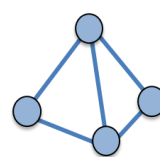
Bronze



Silver



Gold



Platinum

## Conference organization

- Organizers

Spanish Clay Society (SEA)

Instituto de Ciencia de Materiales de Madrid (ICMM), CSIC

Universidad Autónoma de Madrid (UAM) / Facultad de Ciencias



- Collaborators

Centro de Investigaciones Energéticas, Medioambientales y Tecnológicas (CIEMAT)

Universidad Complutense de Madrid (UCM)



UNIVERSIDAD  
COMPLUTENSE  
MADRID

- Support by

Ayuntamiento de Madrid - Madrid Convention Bureau



MADRID  
CONVENTION  
BUREAU



CLAY 2027  
Madrid  
20-25 June

## Program planning

	Sunday 20	Monday 21	Tuesday 22	Wednesday 23	Thursday 24	Friday 25	Saturday 26
8:00		Registration					
	Registration						
9:00		Open ceremony	Plenary 2	Plenary 3	Plenary 4		
	Workshop	Plenary 1					
10:00		Coffee break	Sessions	Sessions	Sessions		
11:00	Coffee break	Sessions					
			Coffee break	Coffee break	Coffee break		
12:00			Sessions	Sessions	Sessions		
	Workshop						
13:00							
14:00				Lunch			
	Lunch					Field trip1 and field trip 2	Field trip 2
15:00		Sessions	Sessions	Sessions	Sessions		
16:00							
	Workshop			Coffee break and poster session			
17:00		Sessions			Closing ceremony		
18:00							
19:00			Field trip 3				
20:00	Ice-breaker party						
21:00				Cocktail dinner			
22:00							



CLAY 2027  
Madrid  
20-25 June